

HEALTHY
PEOPLE

living healthy lives
in healthy communities

NHS

Northern, Eastern and Western Devon
Clinical Commissioning Group



Building a Sustainable future

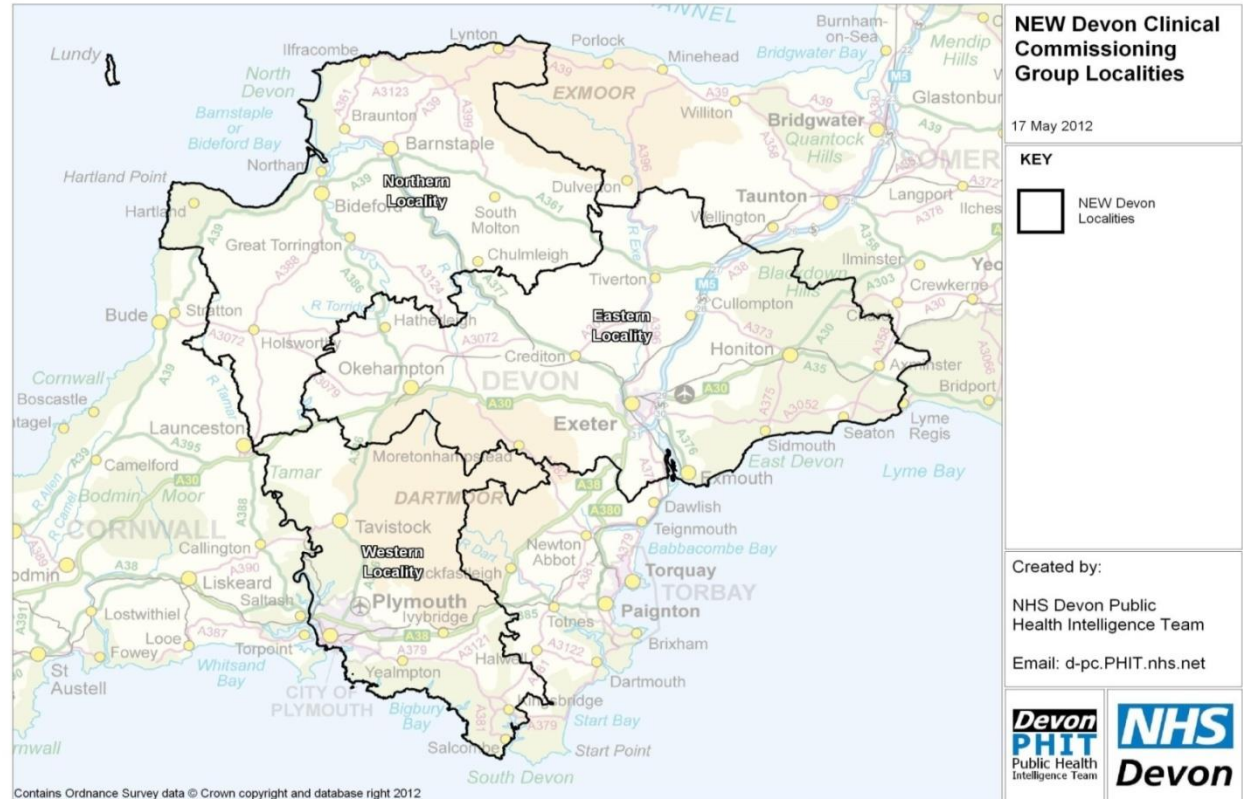
Wallingbrook Health Group 11th November 2013

Perspective on reforms

- Clinically led commissioning
- A great opportunity
- “Line of sight” from public to decision-making
- Values matter – focus on quality

Our CCG

- Three localities
- Population 894,900
- 126 GP practices
- Mixed urban and rural populations
- Mixed demography



Our provider landscape



Integrated Children's Services (Virgin Care Devon)



Devon Doctors



Diving Diseases Research Centre



South Western Ambulance Service NHS Foundation Trust



Our acute provider landscape

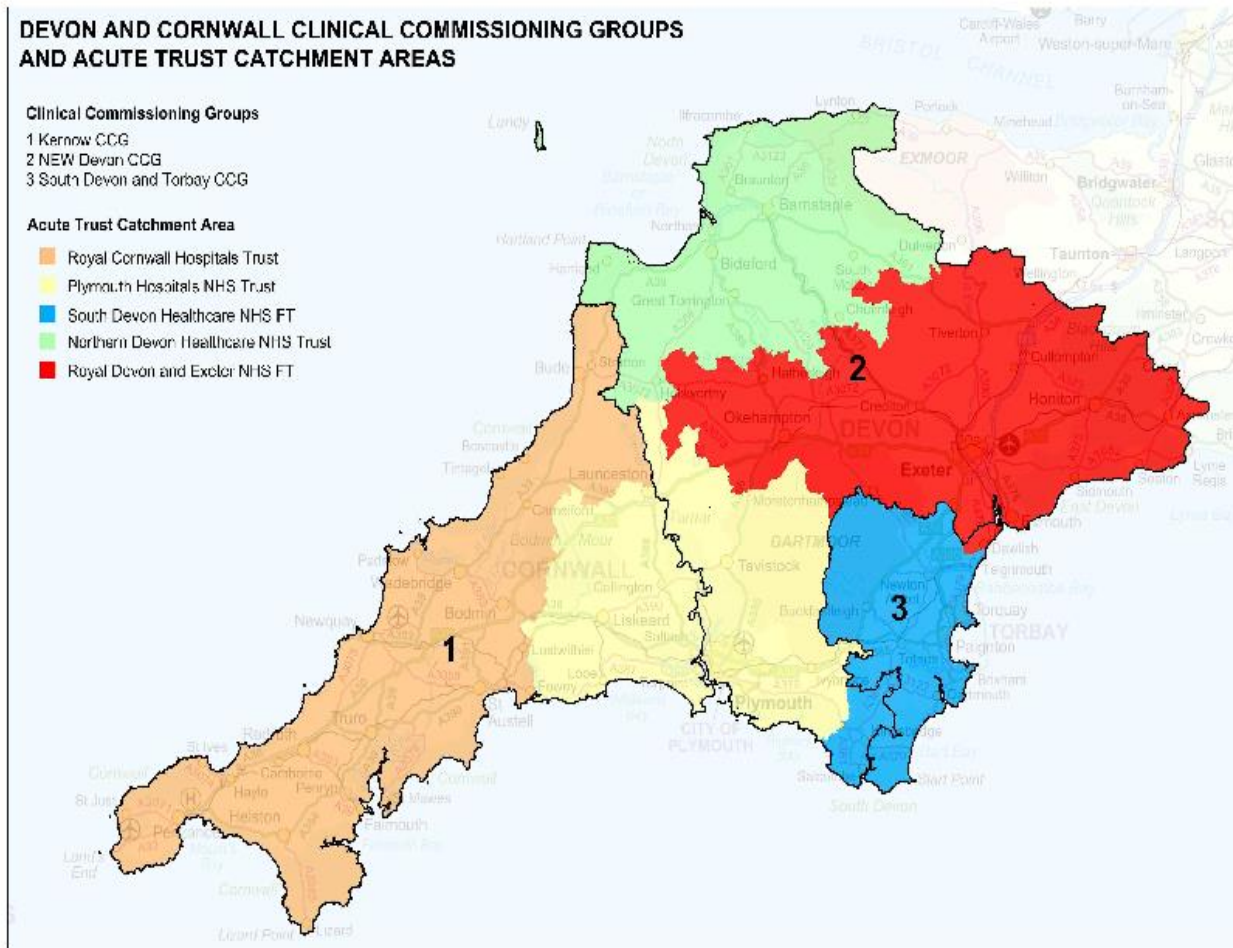
DEVON AND CORNWALL CLINICAL COMMISSIONING GROUPS AND ACUTE TRUST CATCHMENT AREAS

Clinical Commissioning Groups

- 1 Kernow CCG
- 2 NEW Devon CCG
- 3 South Devon and Torbay CCG

Acute Trust Catchment Area

- Royal Cornwall Hospitals Trust
- Plymouth Hospitals NHS Trust
- South Devon Healthcare NHS FT
- Northern Devon Healthcare NHS Trust
- Royal Devon and Exeter NHS FT



Our community provider landscape

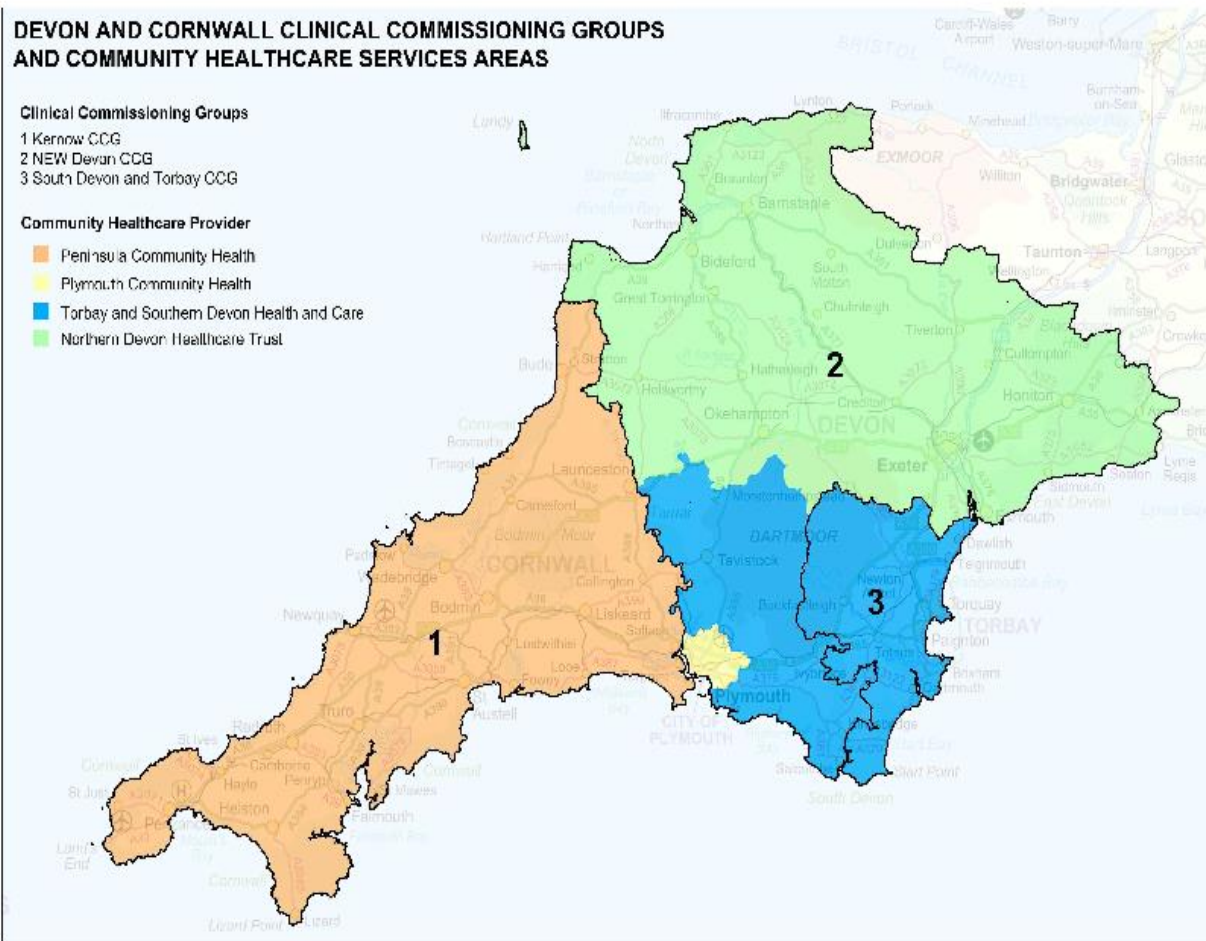
DEVON AND CORNWALL CLINICAL COMMISSIONING GROUPS AND COMMUNITY HEALTHCARE SERVICES AREAS

Clinical Commissioning Groups

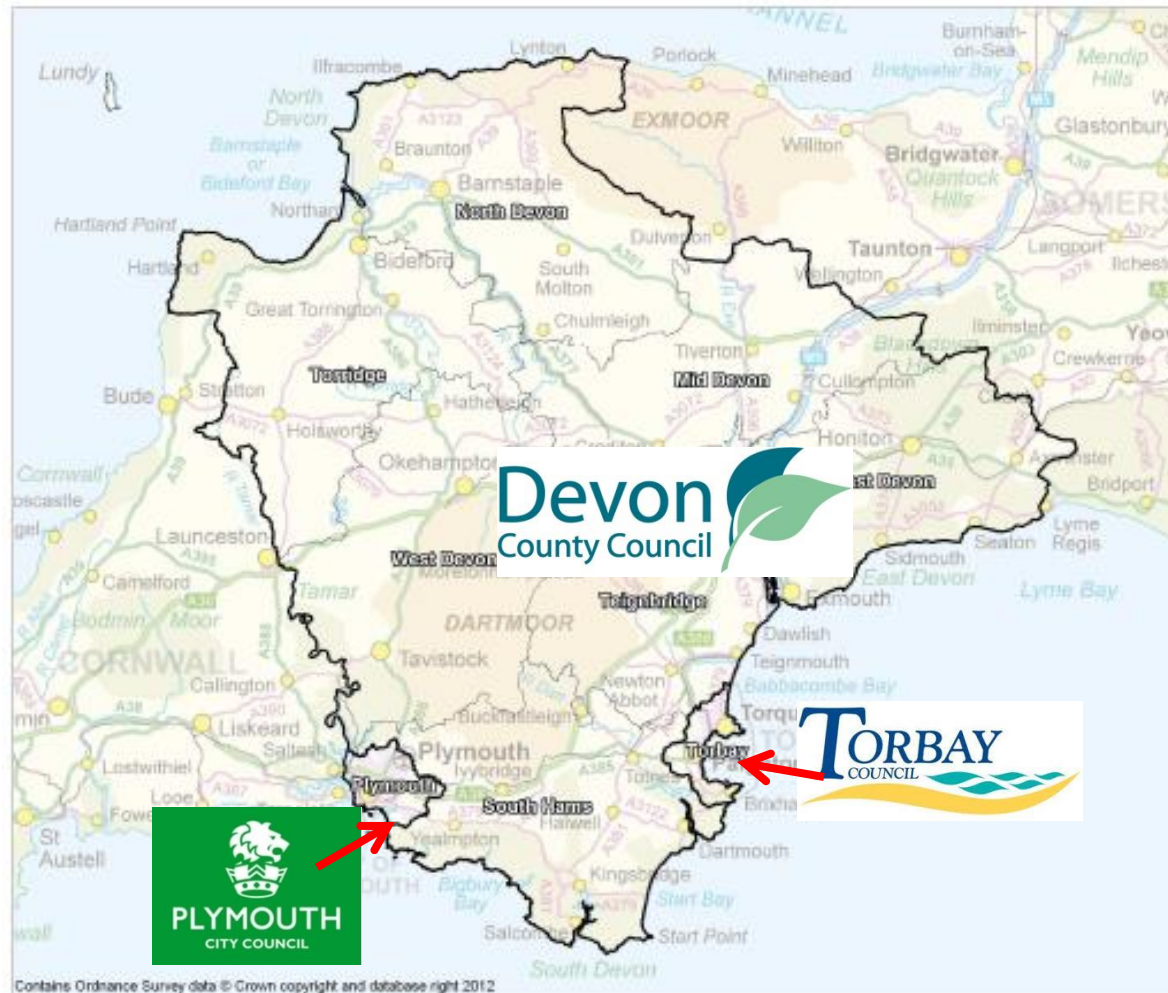
- 1 Kernow CCG
- 2 NEW Devon CCG
- 3 South Devon and Torbay CCG

Community Healthcare Provider

- Peninsula Community Health
- Plymouth Community Health
- Torbay and Southern Devon Health and Care
- Northern Devon Healthcare Trust



Our local authorities and health and wellbeing boards



Our task

To commission sustainable high quality services that deliver great outcomes in the face of the increasing utilisation of healthcare resources, significant demographic challenges and flat cash income

How we are going to achieve this

Our vision and mission:

‘Healthy People, Living Healthy Lives, in Healthy Communities’

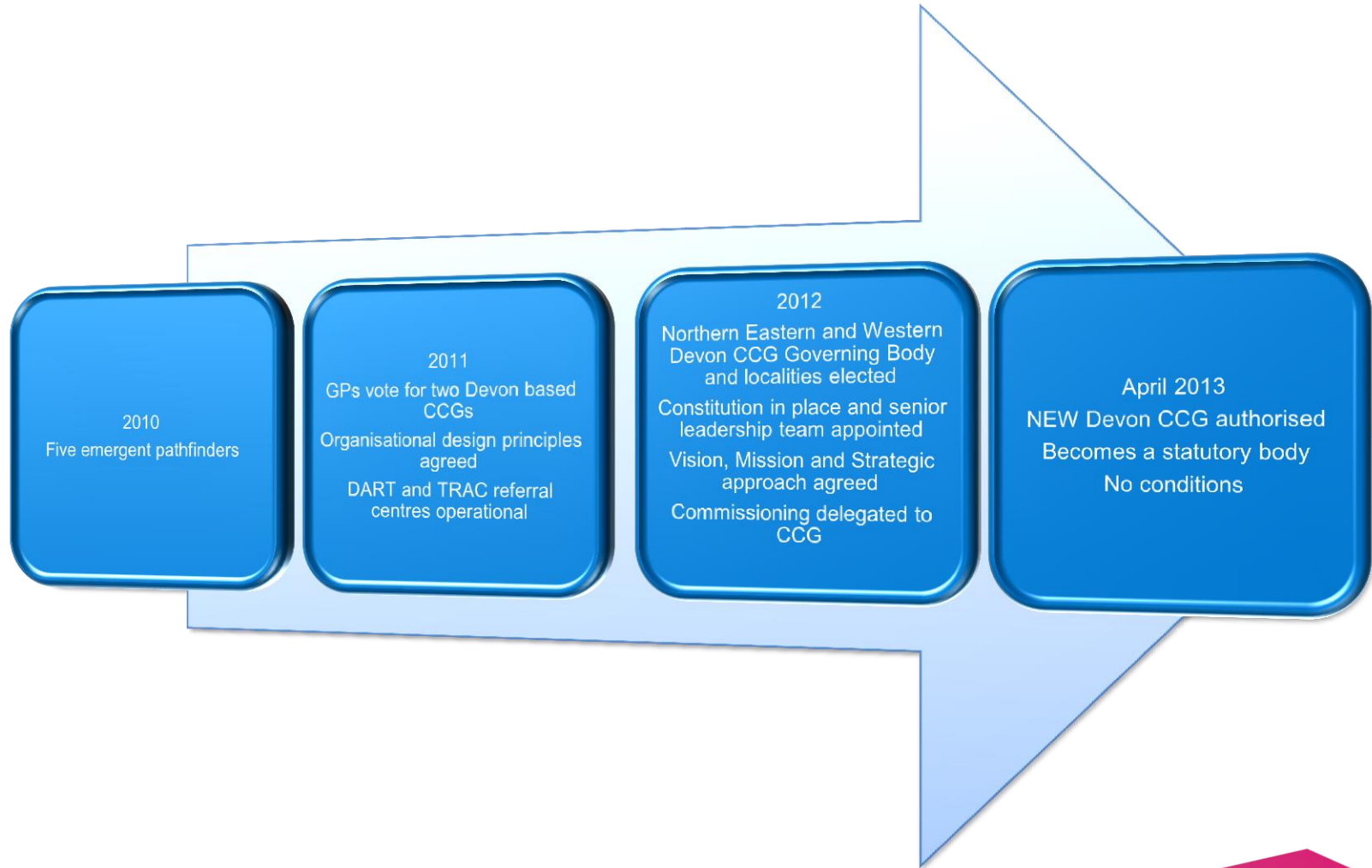
‘Northern, Eastern and Western Devon CCG will transform services with the aim of supporting all individuals to have access to high quality sustainable services that promote their wellbeing and care for them when they are unwell. The CCG also wants to design services that can, whenever possible, be delivered when, where and how people choose.’

Achieving our vision

3 core strategies

- Ensuring clinicians and those they serve jointly take ownership of the sustainability agenda
- Developing and using systems and processes to ensure we make the best use of limited resources, every time
- Moving the focus of our commissioning away from treatment based services to a prevention and maintenance agenda

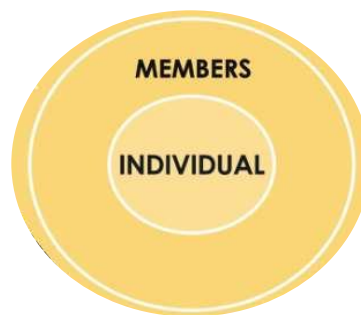
Our journey so far



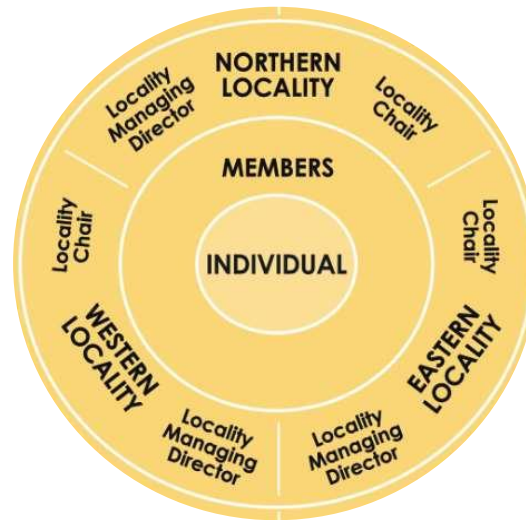
Putting People First



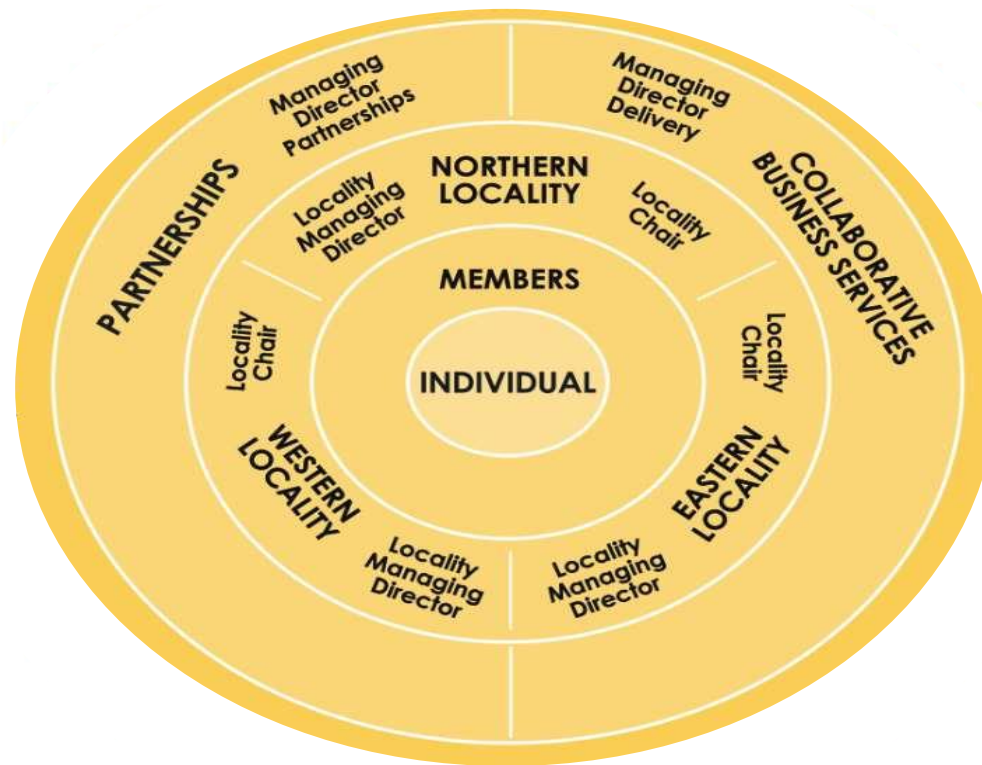
Putting People First



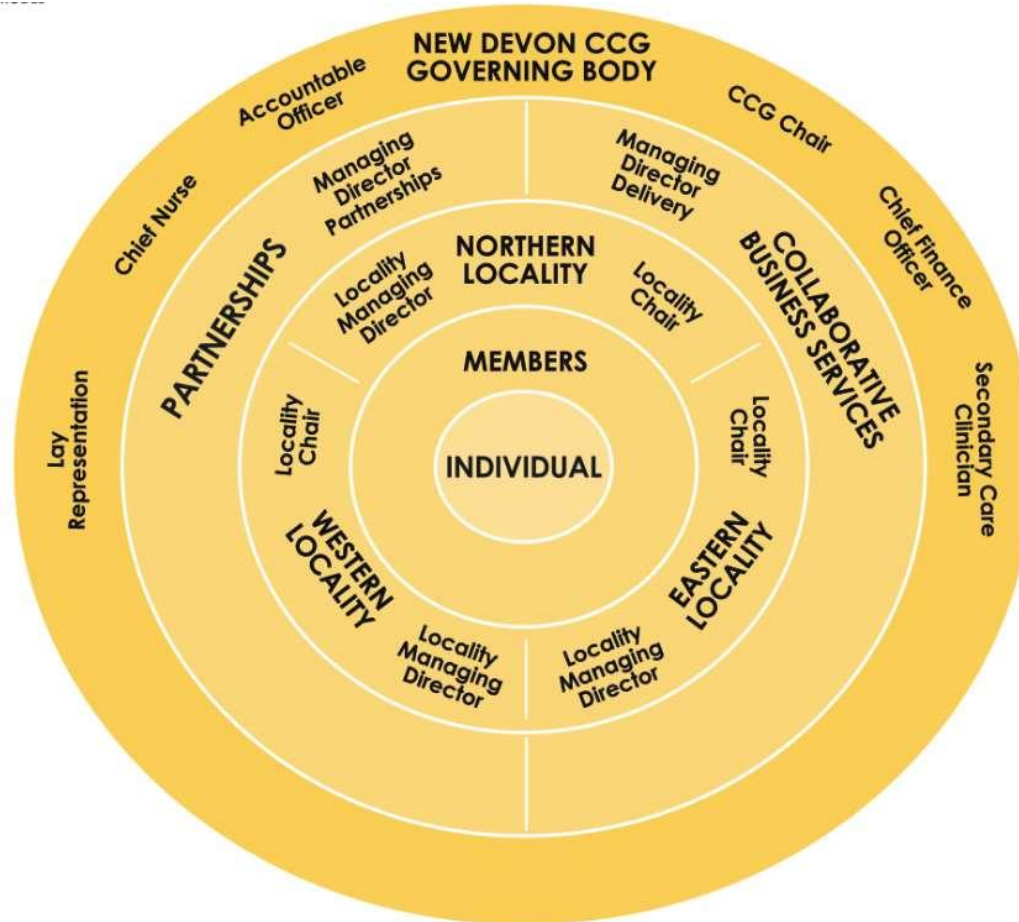
Putting People First



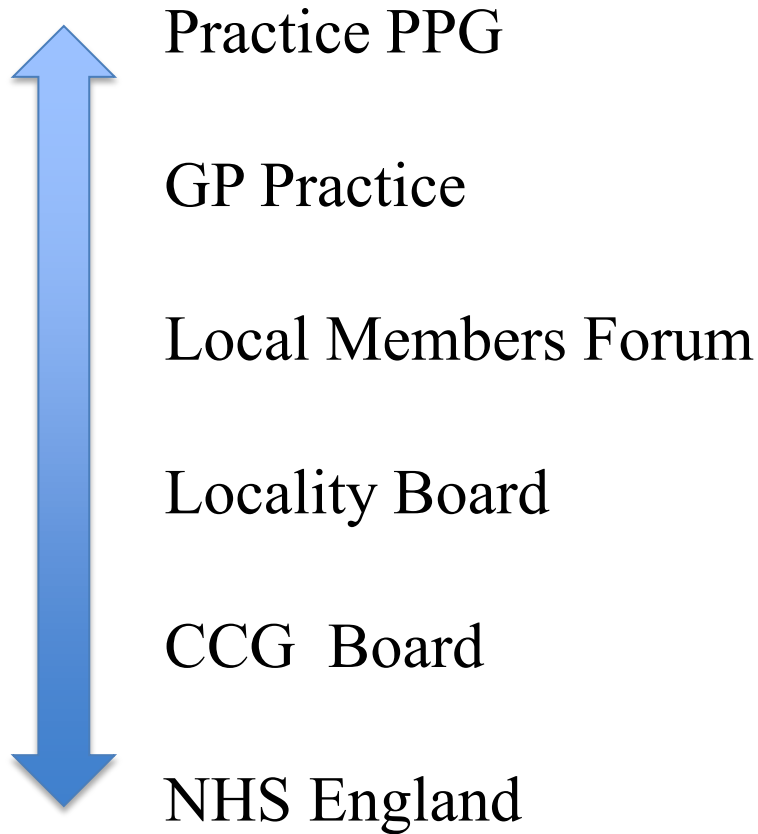
Putting People First



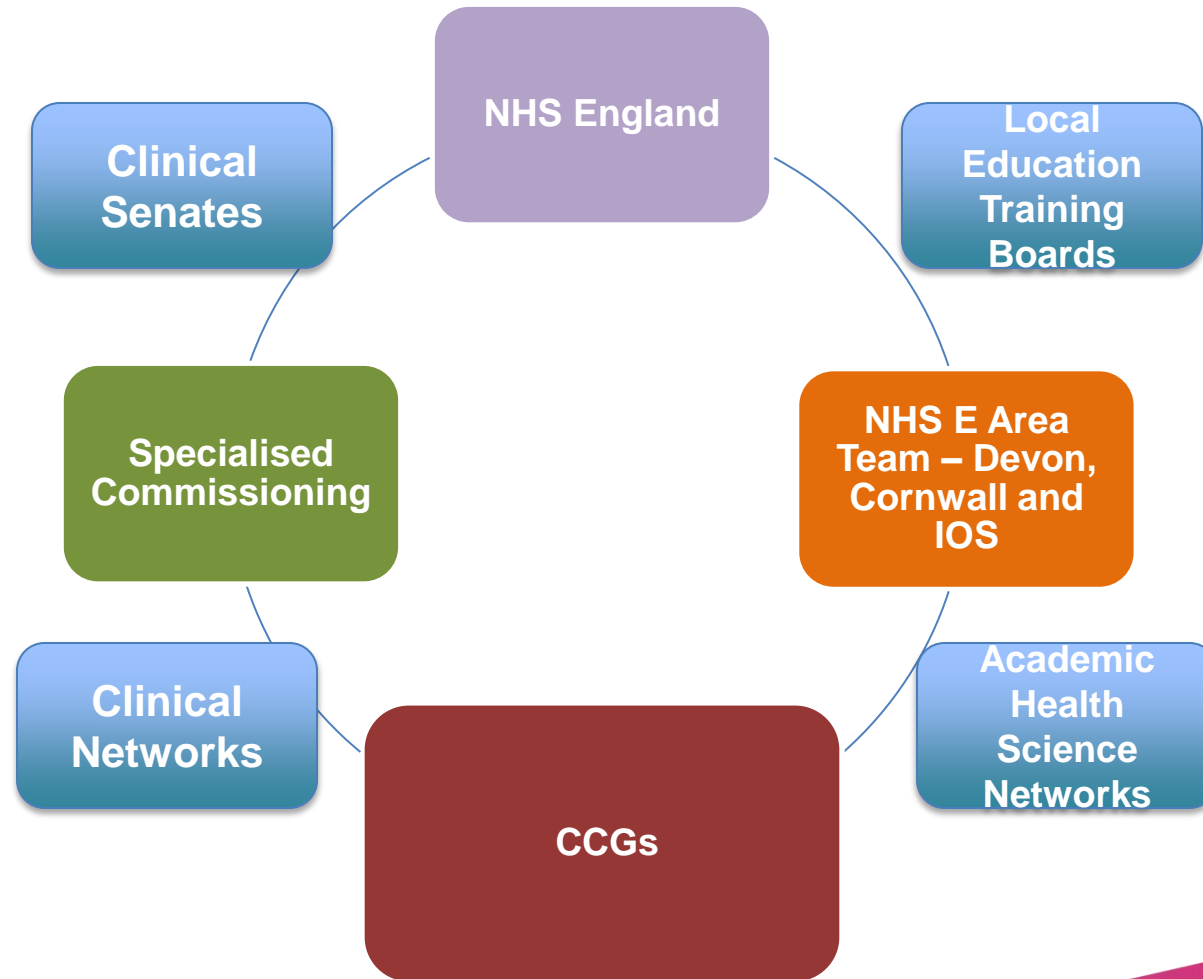
Putting People First



Putting People First



A Connected Organisation – NHS



Partner Organisations – local relationships



A complex system

- <http://www.kingsfund.org.uk/projects/nhs-65/alternative-guide-new-nhs-england>

Duty of Quality



Summary - Maximising our opportunities

We have the following in place:

- A clear CCG wide vision and mission
- Strategic approach defined by understanding our system
- Organisational structure with the individuals we serve at its heart

Summary - Maximising our opportunities

We have the following in place:

- Managerial and governance arrangements to ensure delivery at locality and at scale when appropriate
- New approaches to ensuring we connect, hear and respond to the public and our members – “line of sight”
- A partnering approach to working in the new system

Working together to leave a sustainable legacy for future generations